

# BRANDS OF POWER GENERATION ENGINES WE SPECIALIZE IN

**JENBACHER®**

**CATERPILLAR®**

**MWM®**

## JENBACHER® TYPE 3 / 4 / 6

Jenbacher® Gas Engines stand out for their **technical maturity** and **reliability**, positioning them as leaders in efficiency. Specifically designed to handle non-pipeline gases, they deliver proven savings in both maintenance and fuel costs while extending overall lifespan through enhanced components.



AVAILABLE IN NEW, USED AND  
REMANUFACTURED VERSIONS

WE DO SUPPLY SPARE PARTS TOO:

ORIGINAL GENUINE ; OEM;  
ALTERNATIVE

## CATERPILLAR CG 170 / CG 132

In the realm of relentless operations, Caterpillar® generators emerge as the bedrock of **reliability**, **durability**, and **efficiency**. Crafted to meet the highest standards, they ensure uninterrupted power supply, vital across industries.



## MWM® TCG 2016 / 2020 / 2032

MWM® gas engines are designed for dynamic market demands, ensuring **efficiency**, **reliability**, and environmental sustainability. With infrequent interruptions, limited to two annual scheduled maintenance breaks, and the longest interval between major overhauls, they offer high reliability.



WORLDWIDE DELIVERY OR SELF  
COLLECTION

# BRANDS OF POWER GENERATION TURBINES WE CAN HELP YOU WITH

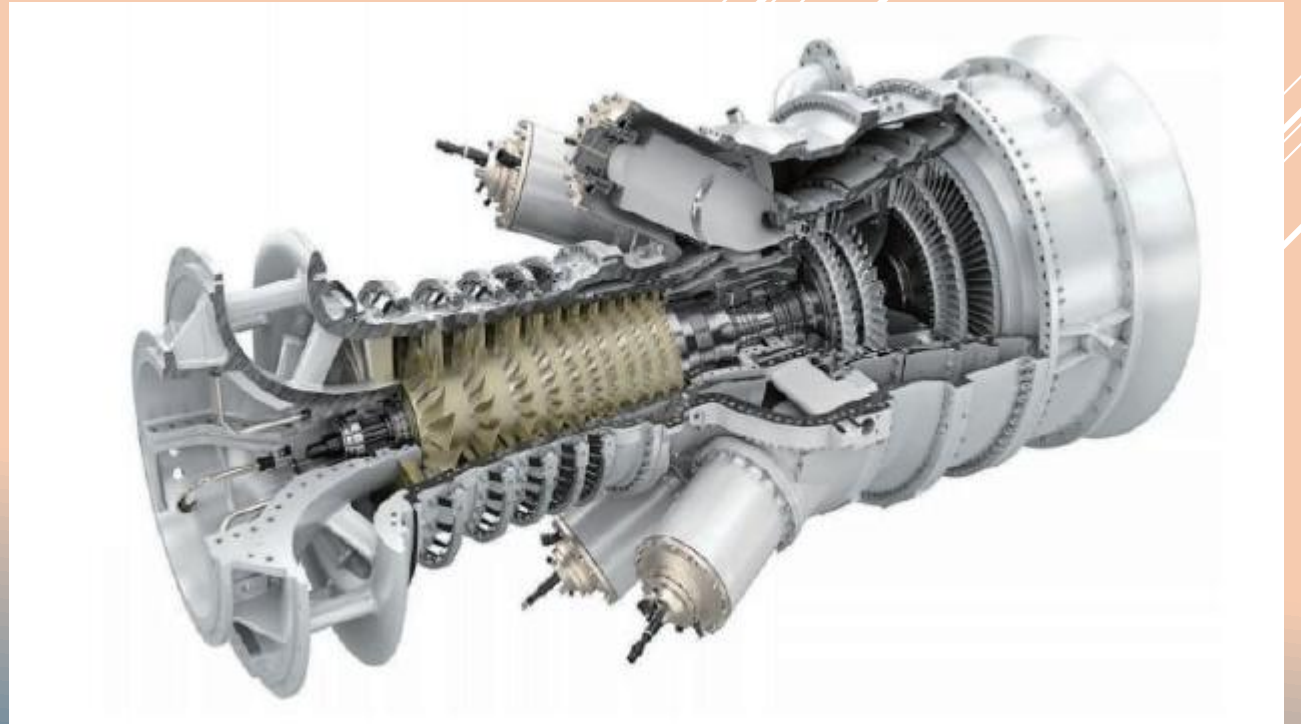
**SIEMENS® (ALSTOM)**

**GE®**

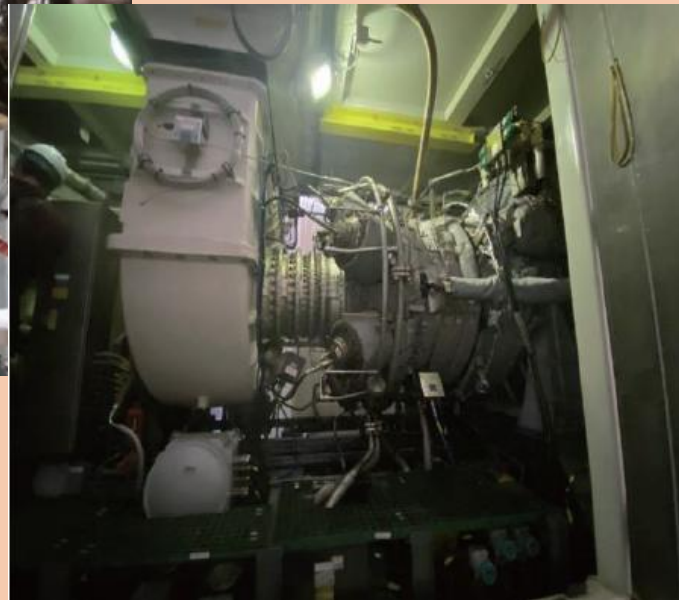
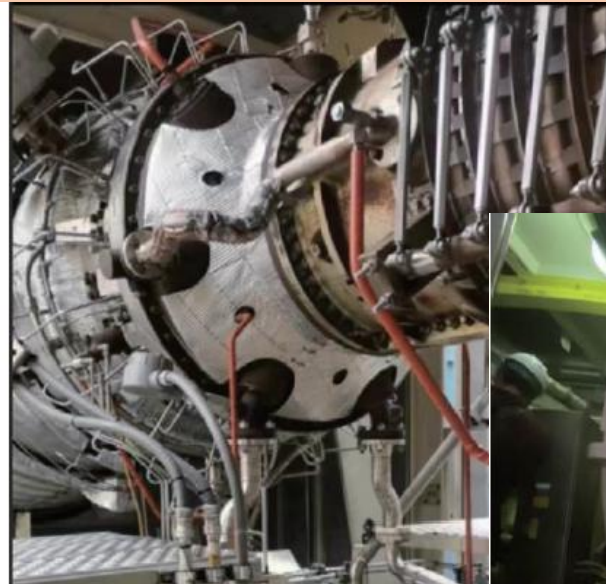
**SOLAR TURBINES®**

**KAWASAKI®**

**MAN®**







**We do supply OEM and top quality ALTERNATIVE spare parts for GAS TURBINES. Here is main models we deal with:**

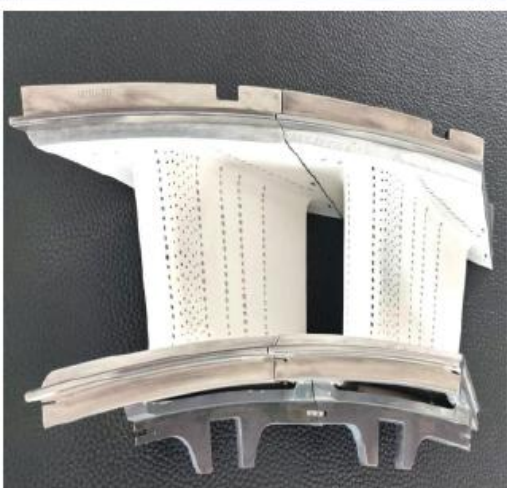
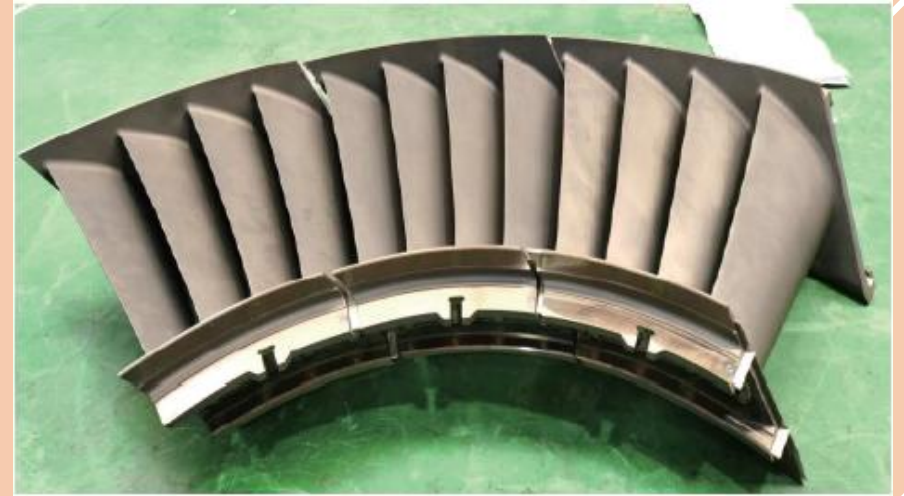
**Siemens: SGT-300, SGT-400, SGT-600, SGT-800, GTX-100 (Alstom)**

**Solar: Taurus 60, Taurus 70, Titan 130, Mars 100**

**GE: LM2500, LM6000, TM2500, Frame 9E, etc.**



# VANES & BLADES WE CAN OFFER NOT ONLY FOR GAS TURBINES. WE CAN OFFER FOR WIND TURBINES AND AVIATION TOO



# PRE-REFORMING CATALYST PR50

## Description:

PR50 is a pre-reduced reforming catalyst with nickel as the active ingredient and  $\text{Al}_2\text{O}_3$  as the support, suitable for pre-reforming processes utilizing natural gas, refinery gas, liquefied petroleum gas and naphtha as feedstock. The catalyst has excellent activity, stability, anti-carbon formation ability and mechanical strength. In addition, it can be used at high space velocity with operational flexibility.

## NOTE:

**This is as example only. We can offer more various catalysts.**



# EATON (DANFOSS) CORPORATION

## PORTFOLIO WE REPRESENT

**EATON® hidrostatic transmissions, valves, piston pumps;**

**Vickers® vane and piston pumps, valves;**

**Char-Lynn® hydraulic motors;**

**Airflex® industrial clutches and brakes;**

**Aeroquip® & Weatherhead® air and hydraulic hoses, fittings, adaptors for industrial and other applications;**

**Internormen® for ALL and ANY industry filtration needs;**

Scope of our supplies also do include Kaeser compressors, various diesel engines, spare parts and equipment for CAT, Komatsu, Liebherr, Cummins, Ropa and other construction and agriculture machines;

Automation items: Siemens, ABB, Bently Nevada, Termopara, WEKA, Kistler, Norgren, Schneider Electric (MiCOM), DuPont, MAC, Direct Logic, Bruel&Kjaer, Allen Bradley, Omron ant etc.

**For more information please  
contact us.**

**We are open to listen Your  
requirements for cooperation.**

**Mr Dainius Malinauskas  
Director  
Finreda UAB  
Sermuksniu St 1-12  
LT-01106 Vilnius  
Lithuania  
Tel +370 5 2791533  
Fax +370 5 2312105  
[www.finreda.net](http://www.finreda.net)**